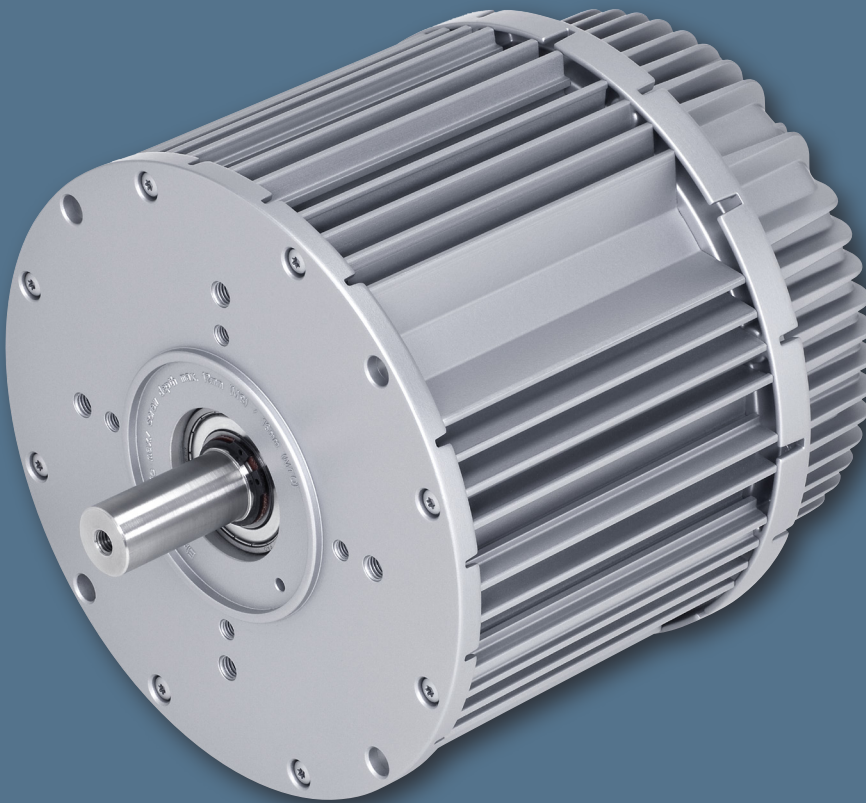


VarioDrive C – an intelligent alternative to IEC standard motors



All advantages at a glance

- ✓ Mains powered EC drive solution
- ✓ Enclosed, compact design with integrated electronics
- ✓ Integrated motor protection
- ✓ Constant and very high efficiency in full load and part load conditions
- ✓ Especially suited for applications with quadratic torque
- ✓ Standard IEC shaft and flange

Compact. Efficient. **Reliable.**

The engineers choice.

ebmpapst

Variodrive C motor series – compact, efficient and reliable!

Variodrive C range Single Phase

Parameter / Motor type	M3G084-GF08-81	M3G084-DF18-81	M3G084-FA33-82	M3G112-IA85-71	M3G112-GA52-71
Basic design	1~ 200-277V 50/60Hz	1~ 230V 50/60Hz	1~ 200-277V 50/60Hz	1~ 200-277V 50/60Hz	1~ 200-277V 50/60Hz
Input Power	392 Watts	500 Watts	620 Watts	620 Watts	740 Watts
Rated Torque	200 Ncm	120 Ncm	160 Ncm	500 Ncm	400 Ncm
Rated speed	1500 rpm	3000 rpm	3000 rpm	1000 rpm	1500 rpm
Efficiency	80%	76%	81%	84%	85%
RS 485	✗	✗	ebmBUS	ebmBUS	ebmBUS
Power Factor Correction	✓	✓	✓	✓	✓
PID controller	✓	✓	✓	✓	✓
Soft start	✓	✓	✓	✓	✓
Over temp protection	✓	✓	✓	✓	✓
Line Under Voltage protection	✓	✓	✓	✓	✓
Motor current limit	✓	✓	✓	✓	✓
Alarm relay	✓	✓	✓	✓	✓
Insulation class	B	B	B	B	B
IP 55	✓	✓	✓	✓	✓
Max ambient temp deg C	40	40	40	40	40
Ball Bearing	✓	✓	✓	✓	✓
Terminal arrangement	Lead type (1m long)	Lead type (1m long)	Junction Box	Junction Box	Junction Box
Weight approx	6.8 kg	5.3 kg	6.9 kg	13 kg	10.3 kg
Shaft diameter	14mm	14mm	14mm	19mm	19mm

Variodrive C range 3 Phase

Parameter / Motor type	M3G084-GF06-42	M3G112-GA32-51	M3G150-FF21-51	M3G150-IF21-52	M3G150-NA02-52
Basic design	3~ 380-480V 50/60Hz	3~ 380-480V 50/60Hz	3~ 380-480V 50/60Hz	3~ 380-480V 50/60Hz	3~ 380-480V 50/60Hz
Input Power	750 Watts	915 Watts	1620 Watts	2100 Watts	2100 Watts
Rated Torque	200 Ncm	500 Ncm	900 Ncm	1200 Ncm	1800 Ncm
Rated speed	3000 rpm	1460 rpm	1500 rpm	1560 rpm	1000 rpm
Efficiency	84%	86%	88%	90%	91%
RS 485	ebmBUS	ebmBUS	ModBUS	ModBUS	ModBUS
Power Factor Correction	✓	✓	✓	✓	✓
PID controller	✓	✓	✓	✓	✓
Soft start	✓	✓	✓	✓	✓
Over temp protection	✓	✓	✓	✓	✓
Line Under Voltage protection	✓	✓	✓	✓	✓
Motor current limit	✓	✓	✓	✓	✓
Alarm relay	✓	✓	✓	✓	✓
Insulation class	B	B	F	F	F
IP 55	✓	✓	✓	✓	✓
Max ambient temp deg C	40	40	40	40	40
Ball Bearing	✓	✓	✓	✓	✓
Terminal arrangement	Junction Box	Junction Box	Junction Box	Junction Box	Junction Box
Weight approx	7.7 kg	9.8 kg	20.4 kg	26.2 kg	31.7 kg
Shaft diameter	14mm	19mm	28mm	28mm	28mm